



14 July 2022

## **ADDENDUM REPORT**

### **DA 22/5708 – Riverside to Athol Services Connection**

This addendum relates to the following documents:

- Statement of Environmental Effects – Riverside to Athol Services Connection, Thredbo Alpine Resort, Kosciuszko National Park, NSW, April 2022, Rev 0; and
- Figure 2 – Riverside to Athol Services Connection Proposal.

In addition to the Project Description outlined in Section 3.2 of the SEE, the Project will also include the installation of a new gas line which will connect to the existing gas infrastructure as shown on the revised site plan provided in **Attachment A**. A services trench section plan is provided in **Attachment B**, which includes the watermain pipe, electrical conduit and gas main.


The following detail provides further clarification around the proposed works:

- This DA does not comprise any Telstra works or the installation of subsurface drainage.
- There will be no connections to existing electrical pits or lateral connections to light poles.
- The works as part of this DA will only include the installation of an empty electrical conduit for future use if required. Each end of the conduit will be marked using GPS, so that the end points can be easily located if required for future development. If future demand requires additional electrical infrastructure within this location, the connections to existing electrical pits/services would be made under a separate DA.

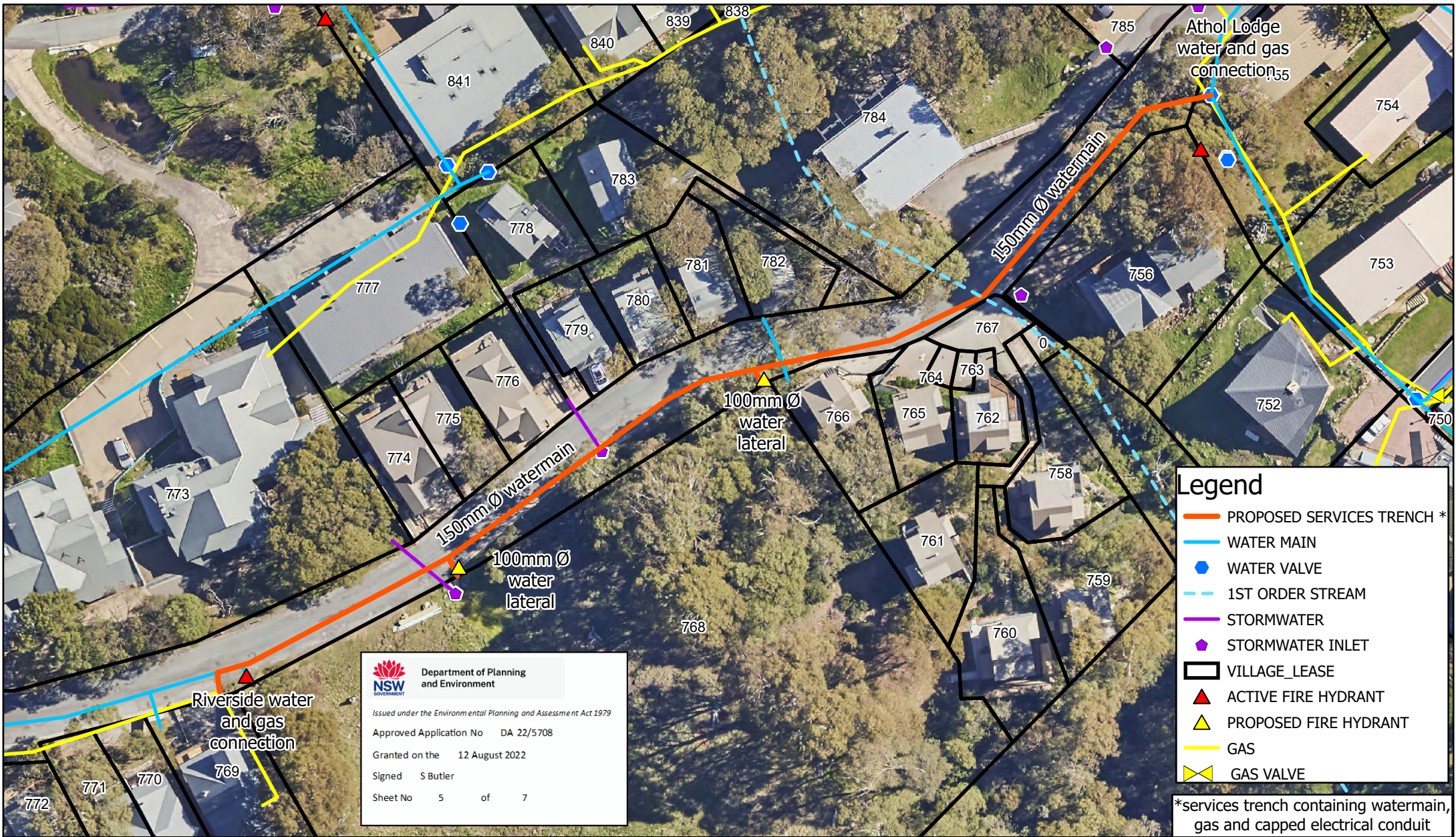
#### **Attachments:**

Attachment A – Services Connection Location

Attachment B – Services Trench Section Plan

|   |   |
|---|---|
|  | <b>Department of Planning<br/>and Environment</b> |
| <i>Issued under the Environmental Planning and Assessment Act 1979</i>              |   |
| Approved Application No   | DA 22/5708  |
| Granted on the  | 12 August 2022                                    |
| Signed  | S Butler  |
| Sheet No  | 2 of 7  |



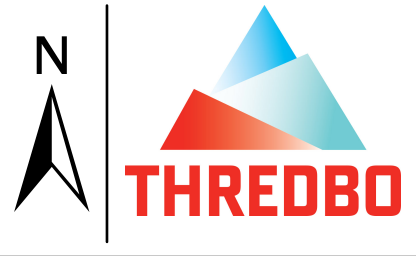


\*services trench containing watermain, gas and capped electrical conduit

Scale: 1:674

5.2 7.50 5.5 11 16.5 22 Meters

Map Projection: Universal Transverse Mercator  
Horizontal Datum: GDA 2020  
Grid: GDA 2020 MGA Zone 55



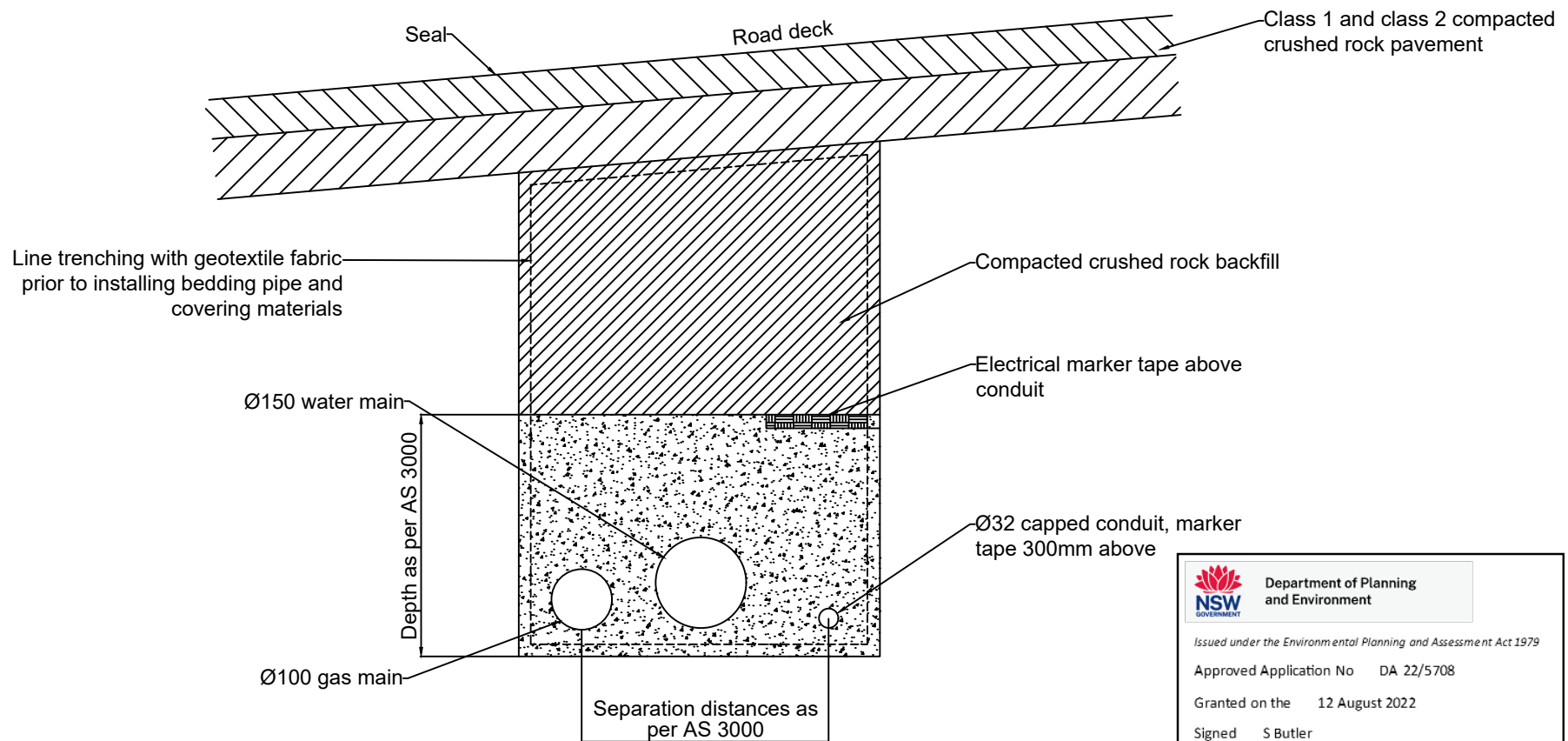
**SERVICES CONNECTION LOCATION**

Project: DA 22-5708  
Riverside to Athol Lodge Services Connection

Note: Due to the age of services in the village, locations shown represent our best estimation.

Revision: 6  
Date: 14/07/2022  
Produced By: KO





**NSW** Department of Planning and Environment

*Issued under the Environmental Planning and Assessment Act 1979*

Approved Application No DA 22/5708

Granted on the 12 August 2022

Signed S Butler

Sheet No 6 of 7

#### NOTES

1. Minimum depth and separation of all services will be met in accordance with AS/NZS 3000
2. Electrical marker tape laid 300mm above electrical conduit in accordance with AS/NZS 3000

#### DRAWING

### Services Trench Cross Section

#### PROJECT

DA 22 - 5708 Riverside to Athol Lodge Services Connection



| REV                          | DATE     | DESCRIPTION                  |
|------------------------------|----------|------------------------------|
| 1                            | 14/07/22 | Original for DA              |
|                              |          |                              |
|                              |          |                              |
| DESIGNED BY<br>K. O'Sullivan |          | CHECKED BY<br>E. Diver       |
| SCALE NTS                    |          | FILE NAME<br>Services Trench |
| SHEET 1/1                    |          | Cross Section.dwg            |